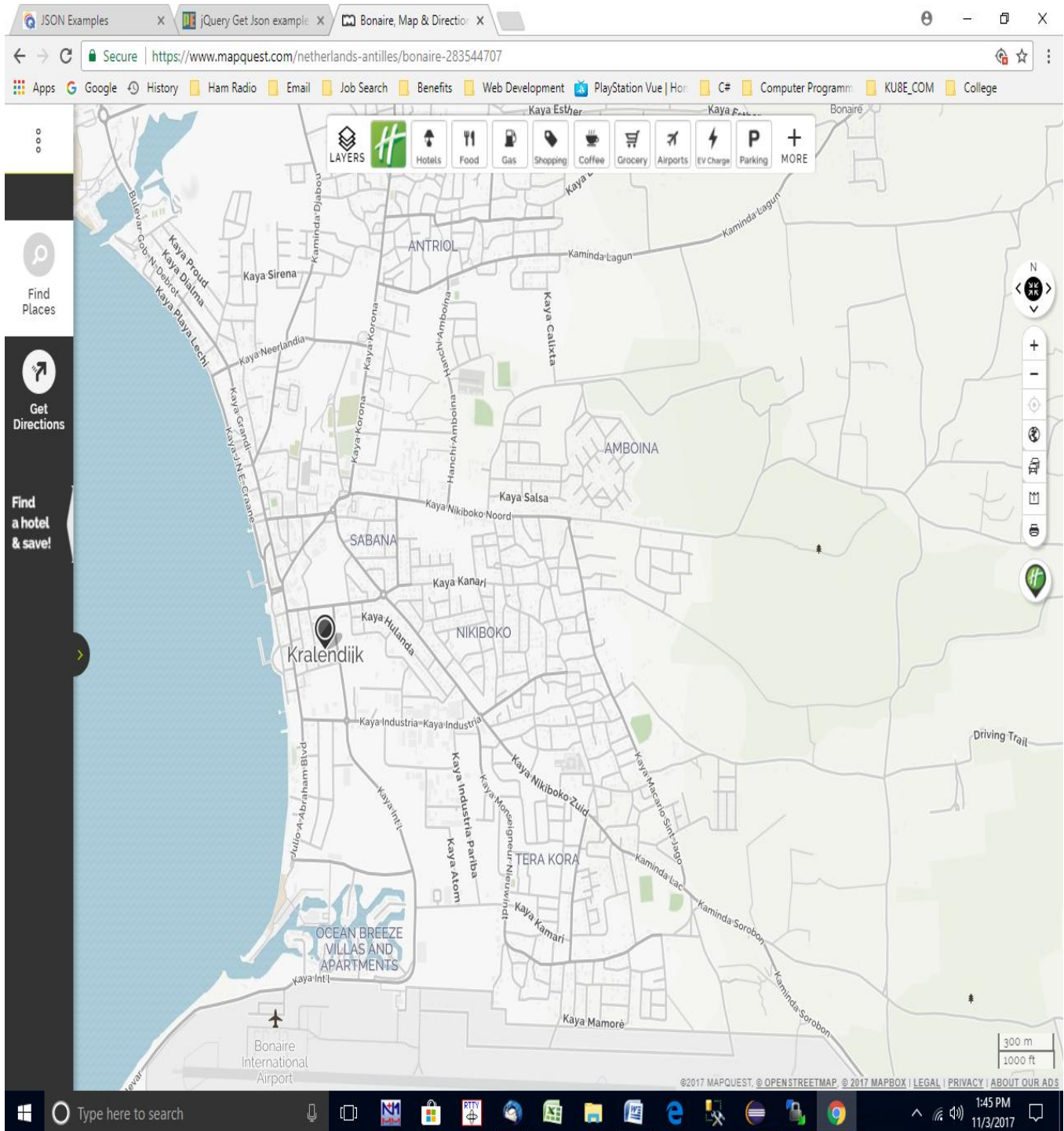
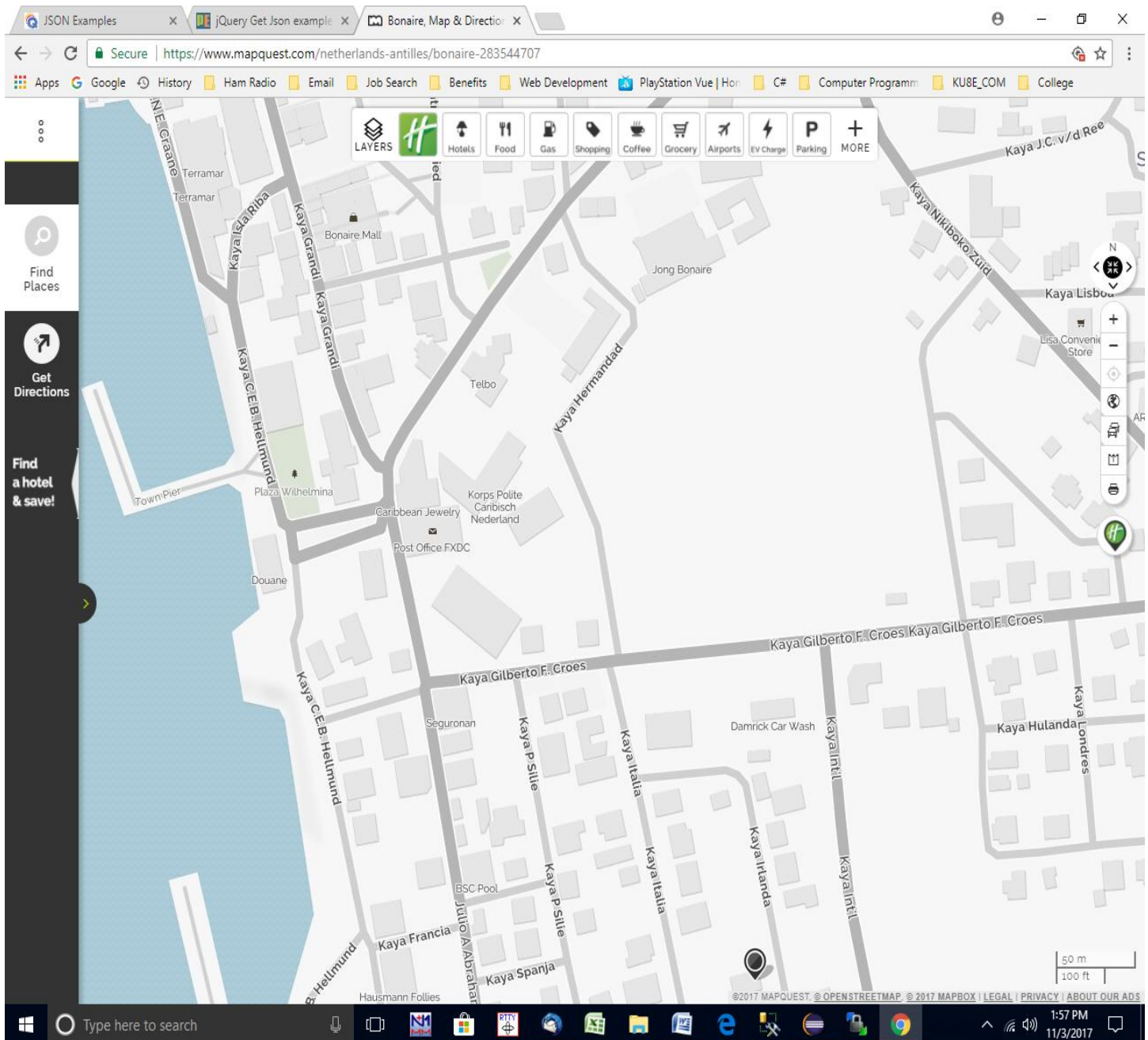


Directions to PJ4G House from Airport

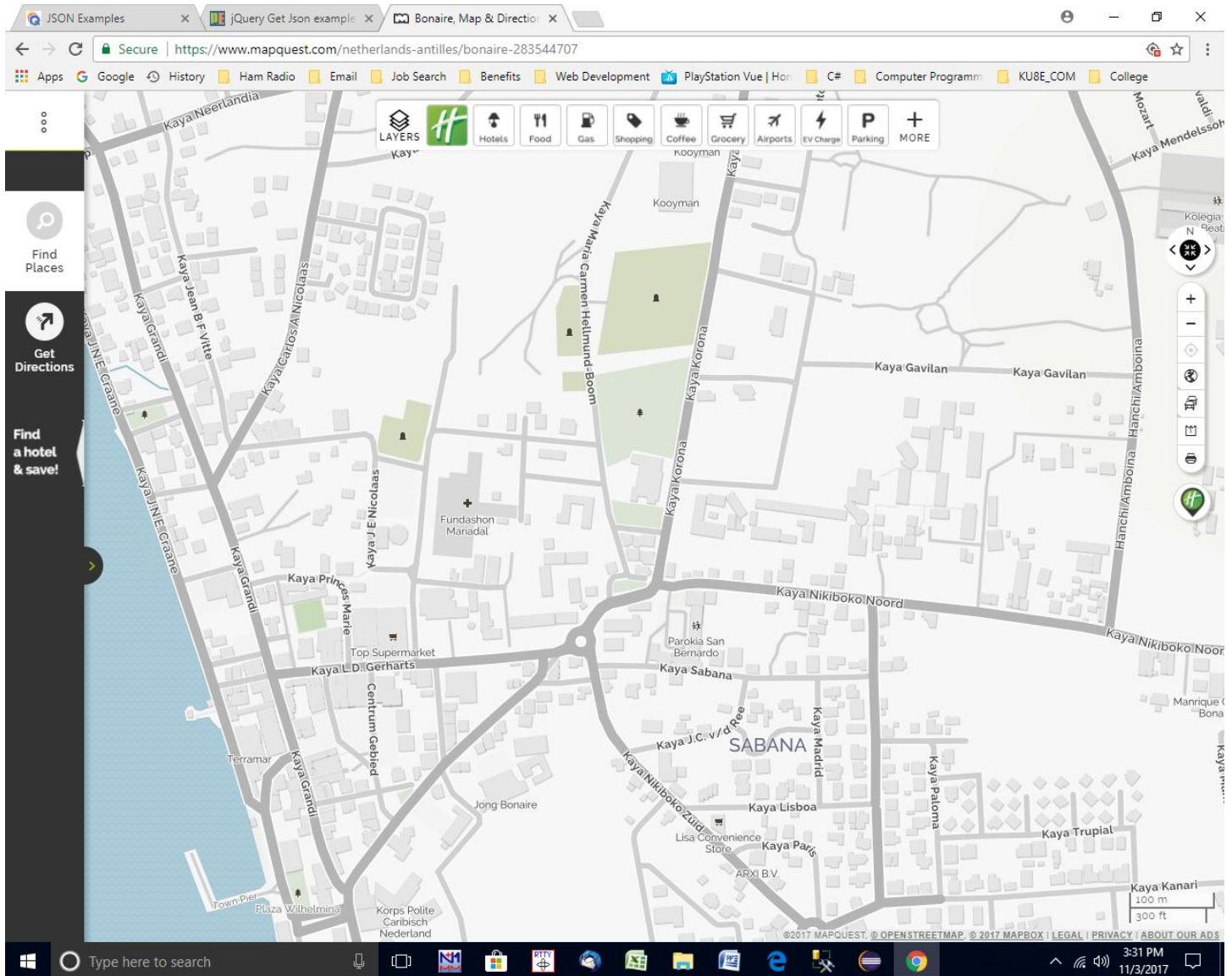
Turn **right** out of airport parking lot onto **Kaya Int'l** . You will come to a traffic circle. Continue **straight** on **Kaya Int'l** until it dead ends into **Kaya Gilberto F Croes**. Turn **left** onto **Kaya Gilberto F Croes**.



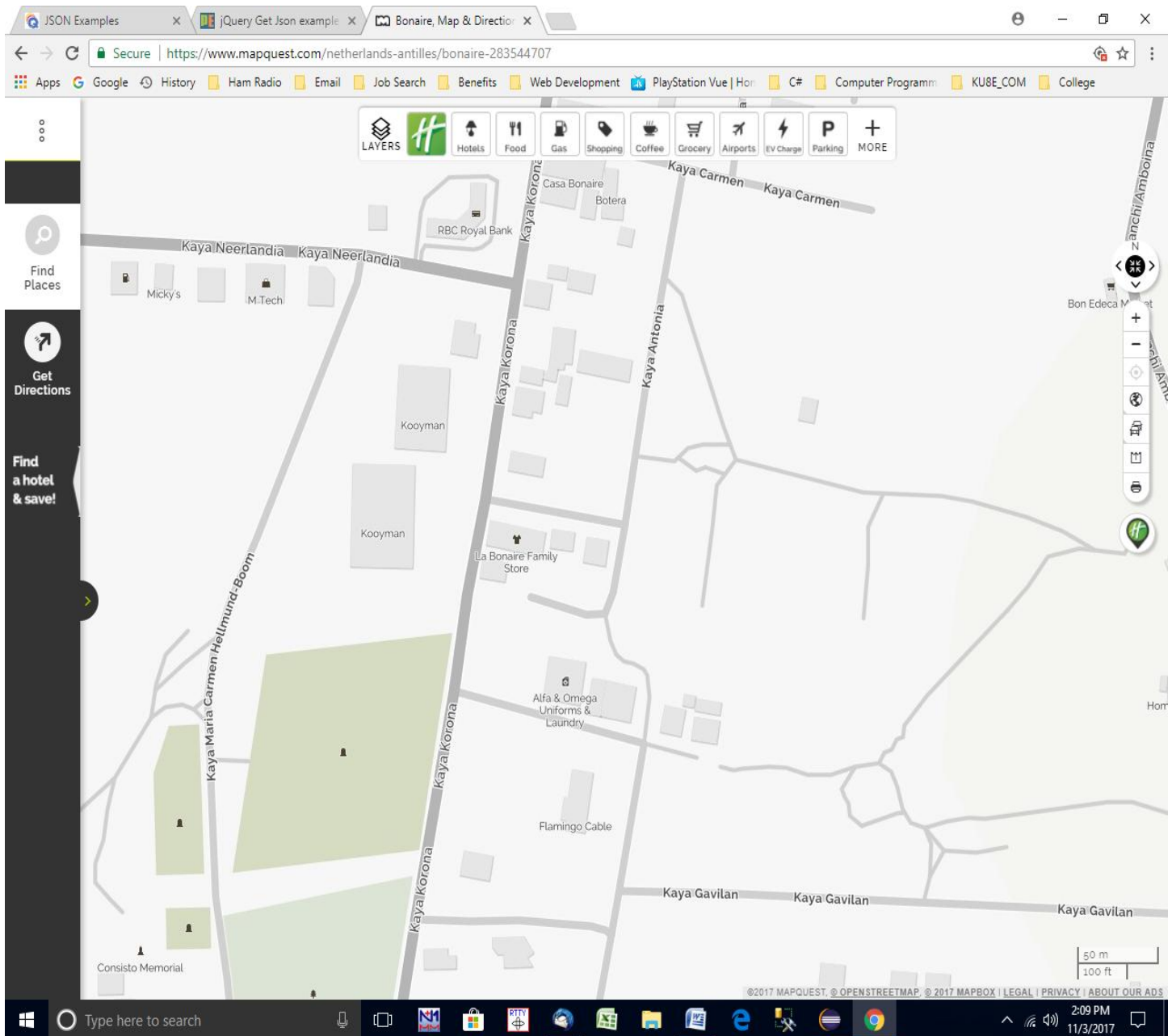
Kaya Gilberto F Croes will dead end into **Julio A Abraham Blvd.** Turn **right** onto **Julio A Abraham Blvd.** You should pass the downtown **tourist area** on the left and the **Post Office** and **Telbo** on the right. This road will dead end into **Kaya L D Gerharts**. Turn **right** onto **Kaya L D Gerharts**.



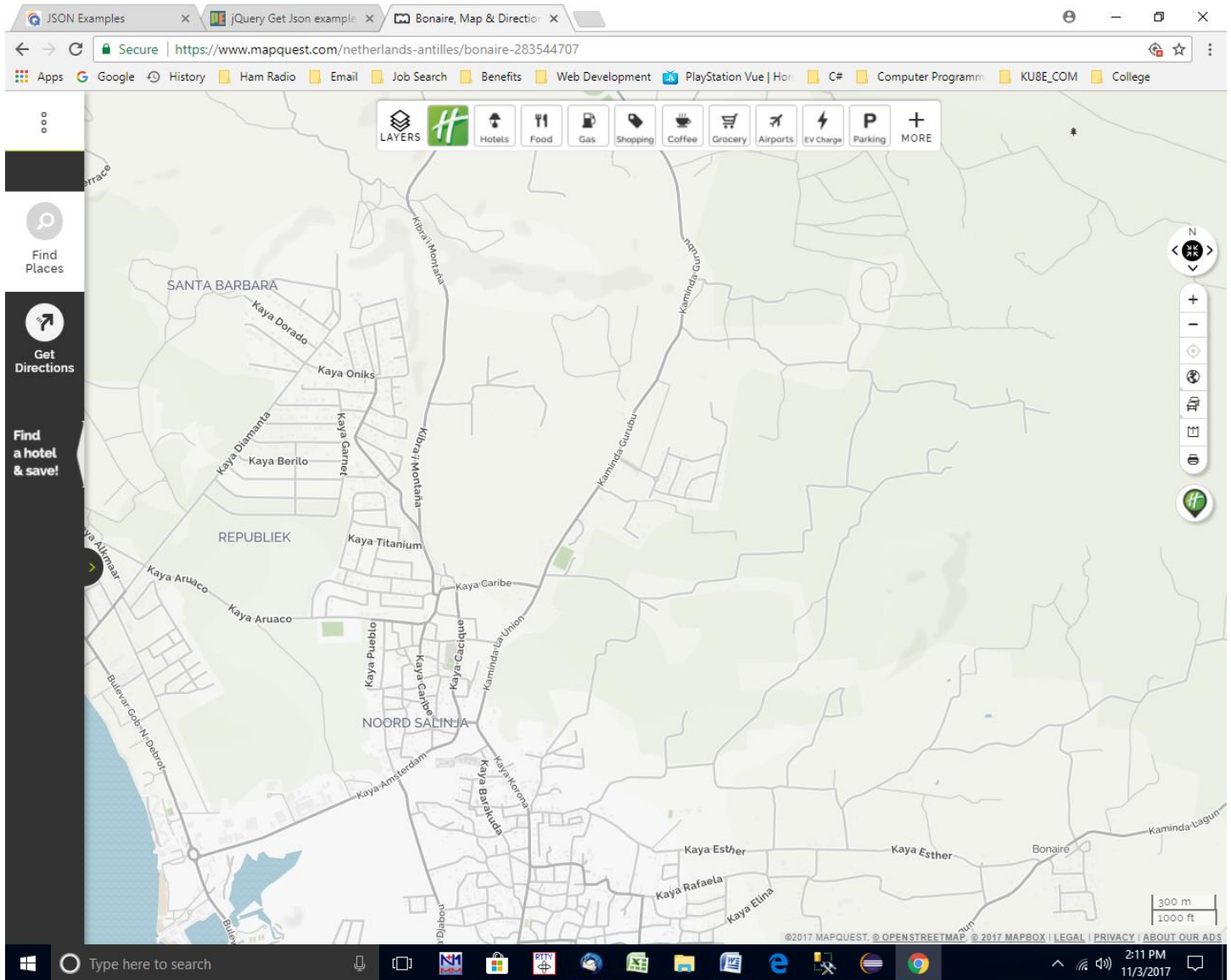
Turn **right** towards the traffic circle. Take the **2nd road** off the traffic circle. It should be named **Kaya Korona**. You should see a church on the right. This is the main road towards **Rincon**.



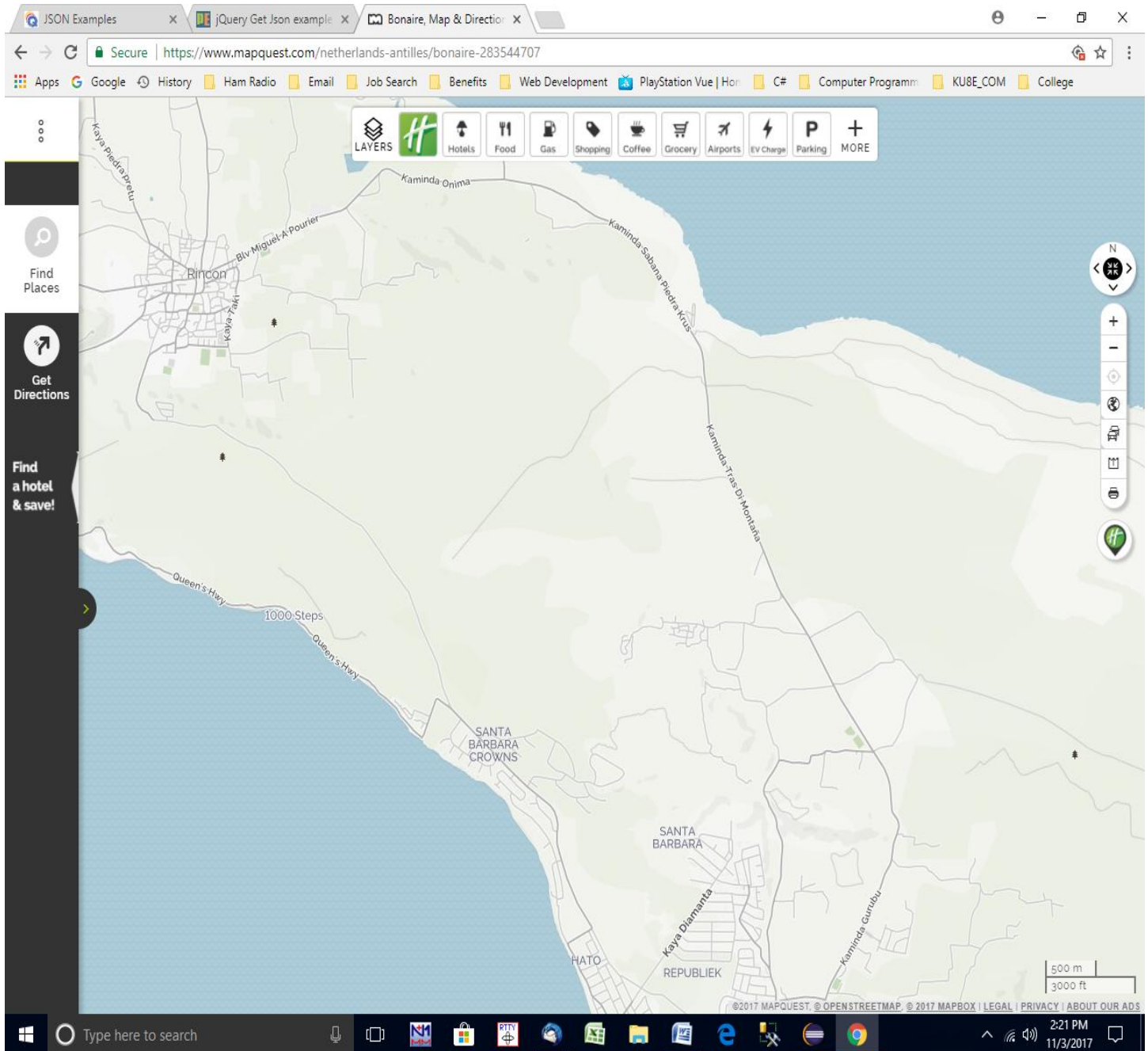
You will pass **Flamingo Cable** on the right, **Kooyman** and a **RBC Bank** on the left. **Continue** on the main road.



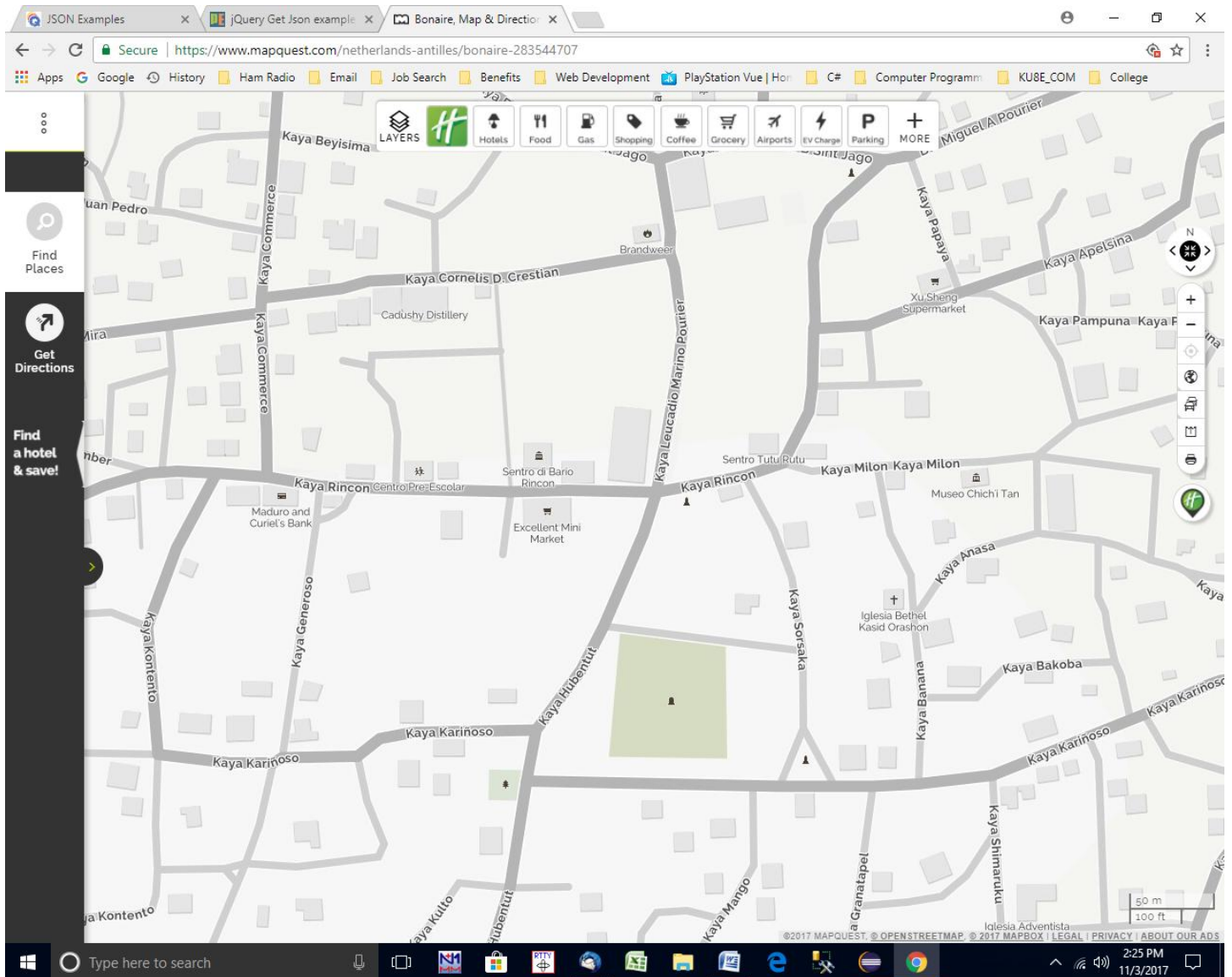
When you pass the **Curoil** gas station the road will change names to **Kaminda Gurubu**. Don't worry much about the street name change. This is the main highway to **Rincon**.



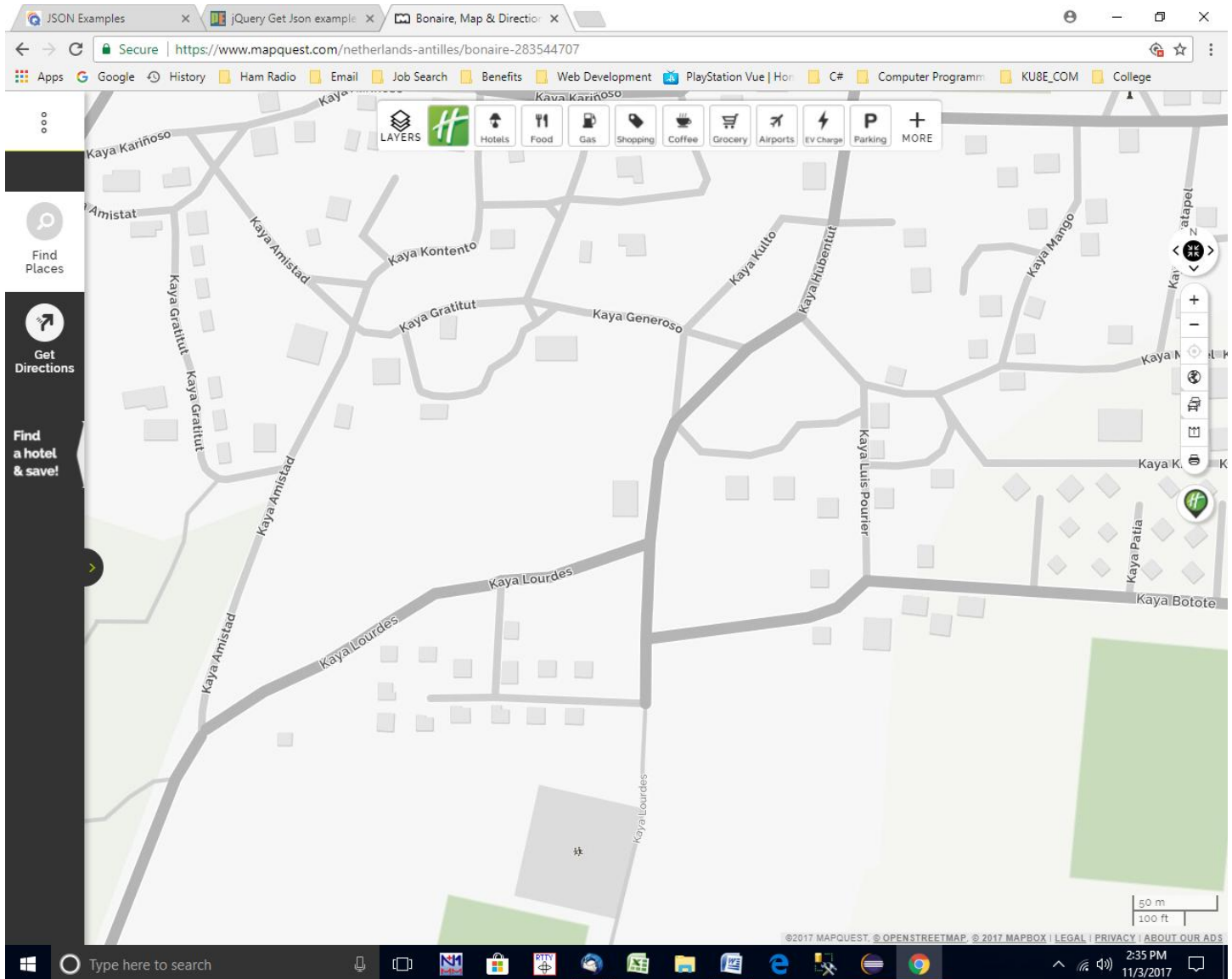
Continue on the main highway towards Rincon. **Be very care on this highway.** There are lots of sharp curves and crazy drivers. They have lots of accidents on this road.



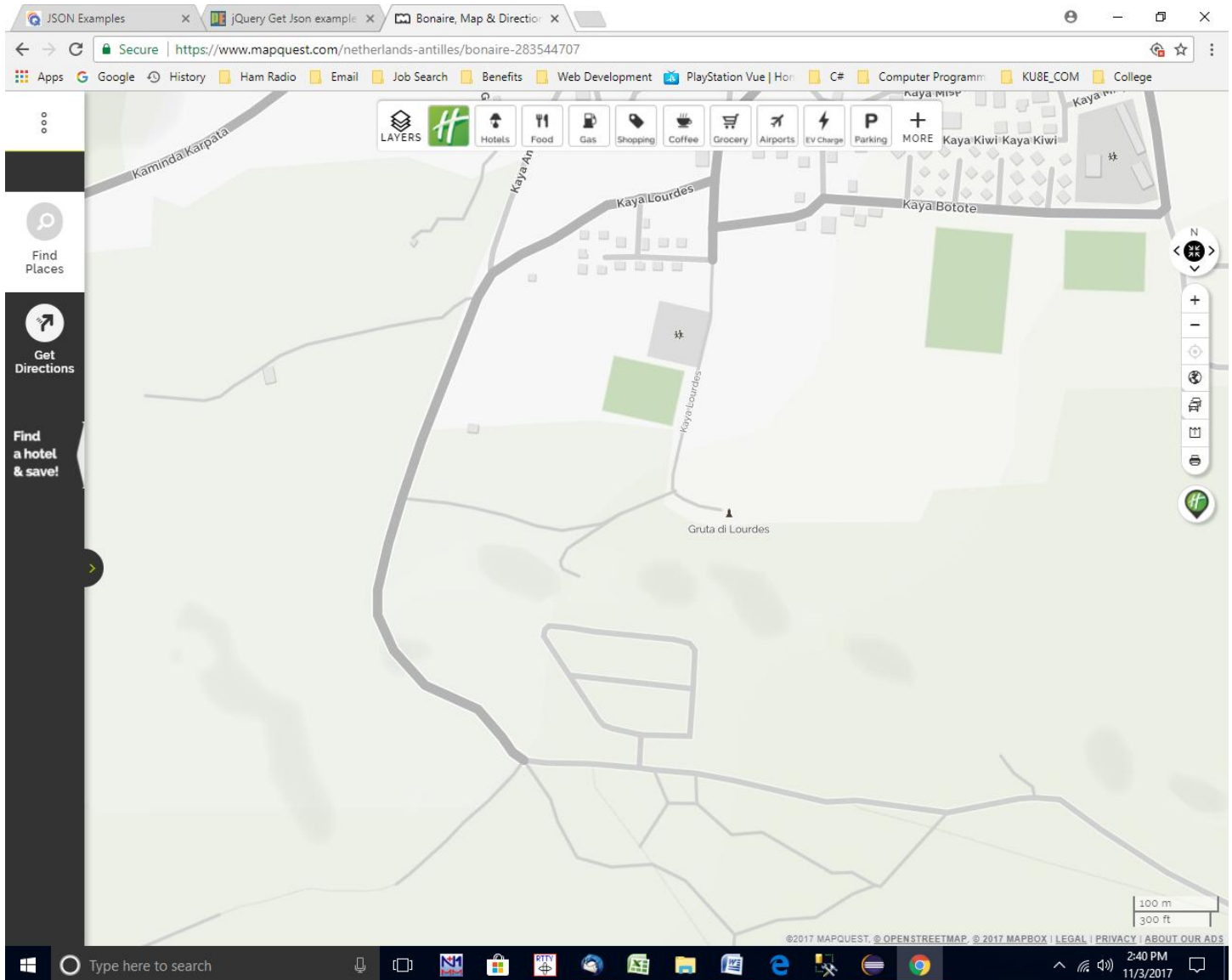
When you get into **Rincon** the road will veer towards the left and turn into **Kaya Rincon**. You will want to turn **left** onto **Kaya Hubentut**. You should see a memorial on the corner of **Kaya Rincon** and **Kaya Hubentut**. When you are on **Kaya Hubentut** there will be a cemetery that you pass on the left. If you missed the turn for **Kaya Hubentut** you will pass a mini market on the left and a school just across the street. You would need to turn around.



Continue on **Kaya Hubentut**. The road will veer to the right. You should then come to **Kaya Lourdes**. Turn **right** onto **Kaya Lourdes**. This is the road that goes up the hill to **Subi Ricon**.

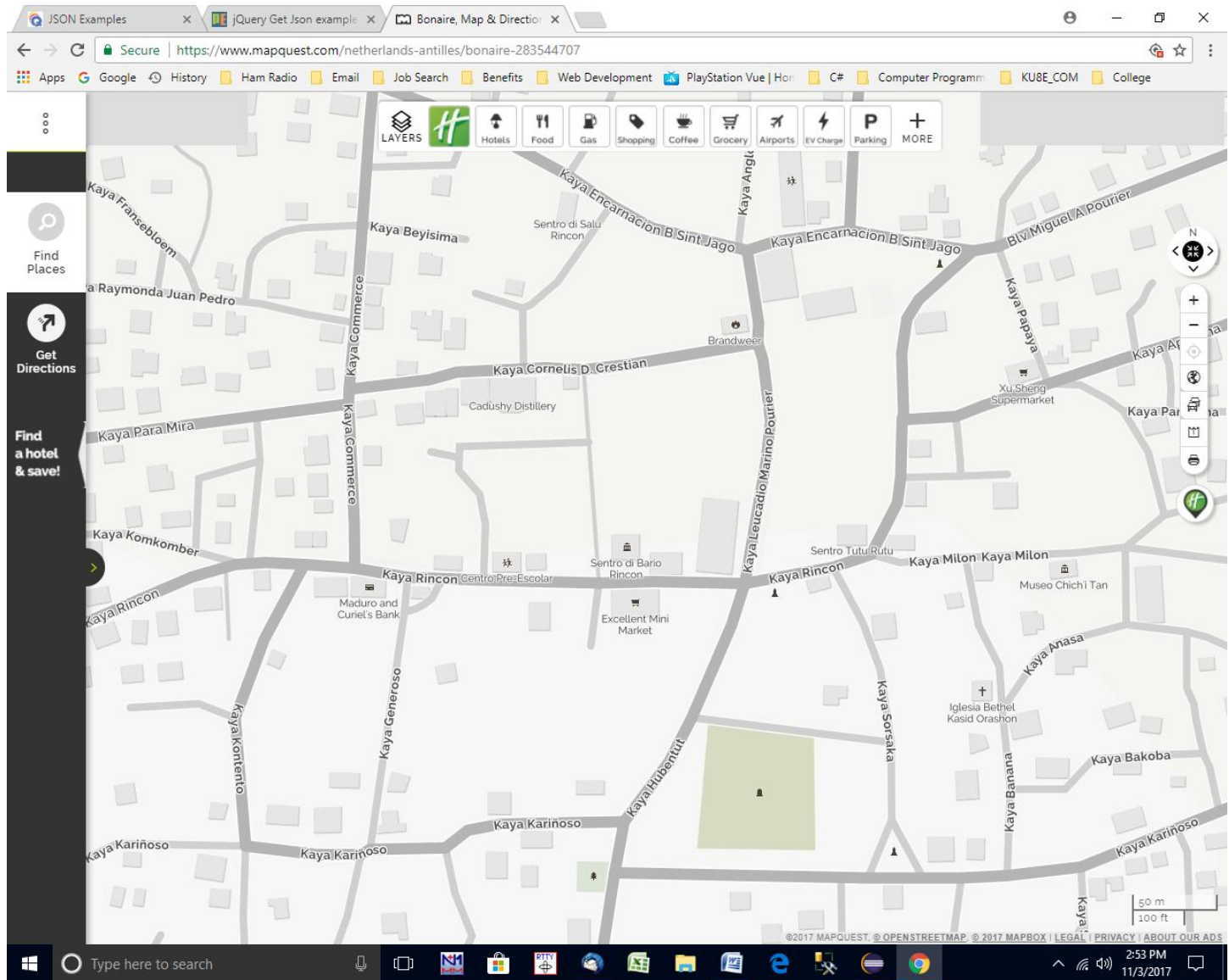


When you get to the top of the hill you will see a bunch of **towers** and a **water storage tank**. You want to make a **left** turn and then **another left** turn on the first road on the **left**. You will then make another **immediate left** turn. Go to the end of the street. It's the yellow house on the left. **12 Subi Rincon**.

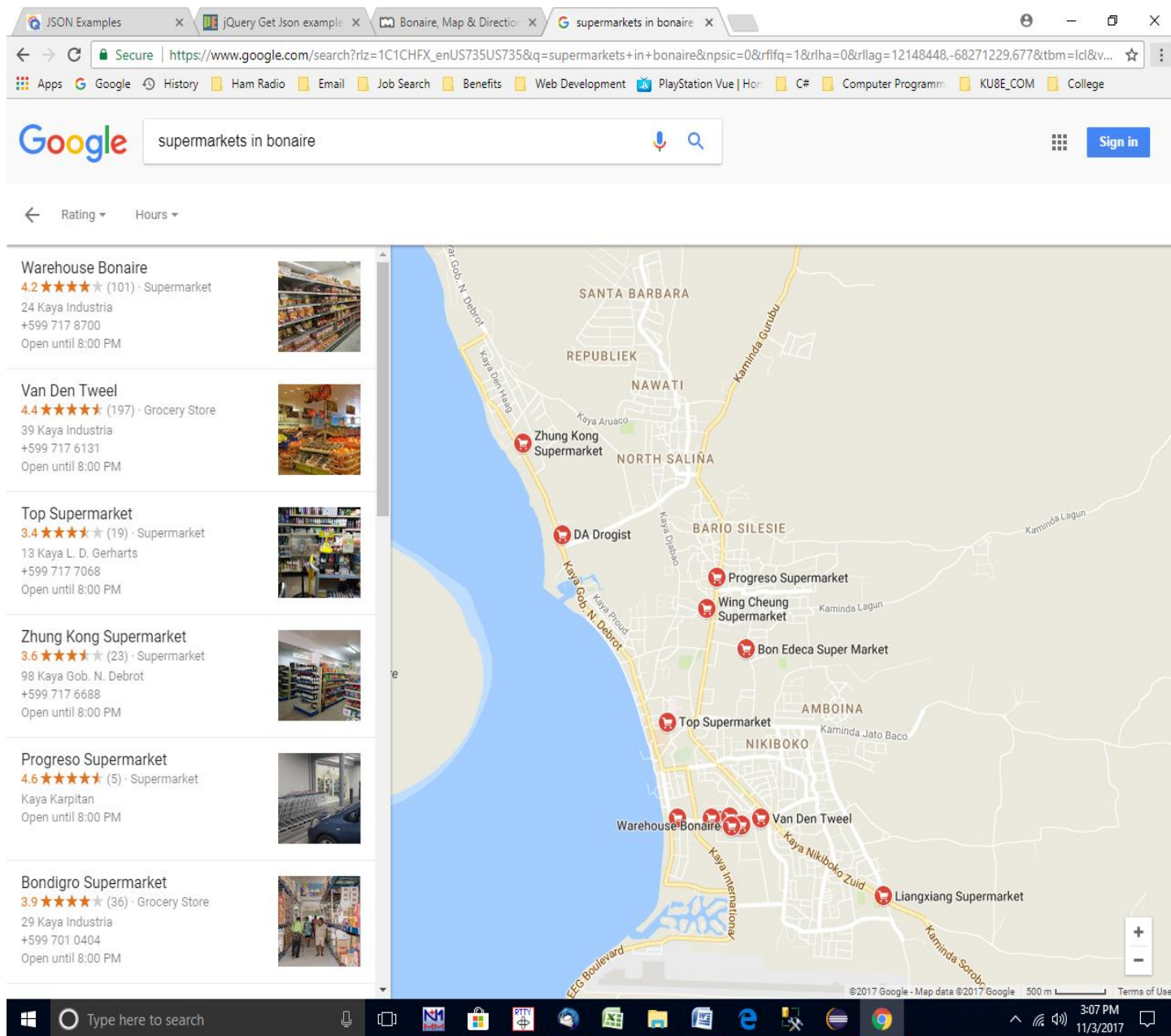


Grocery Stores

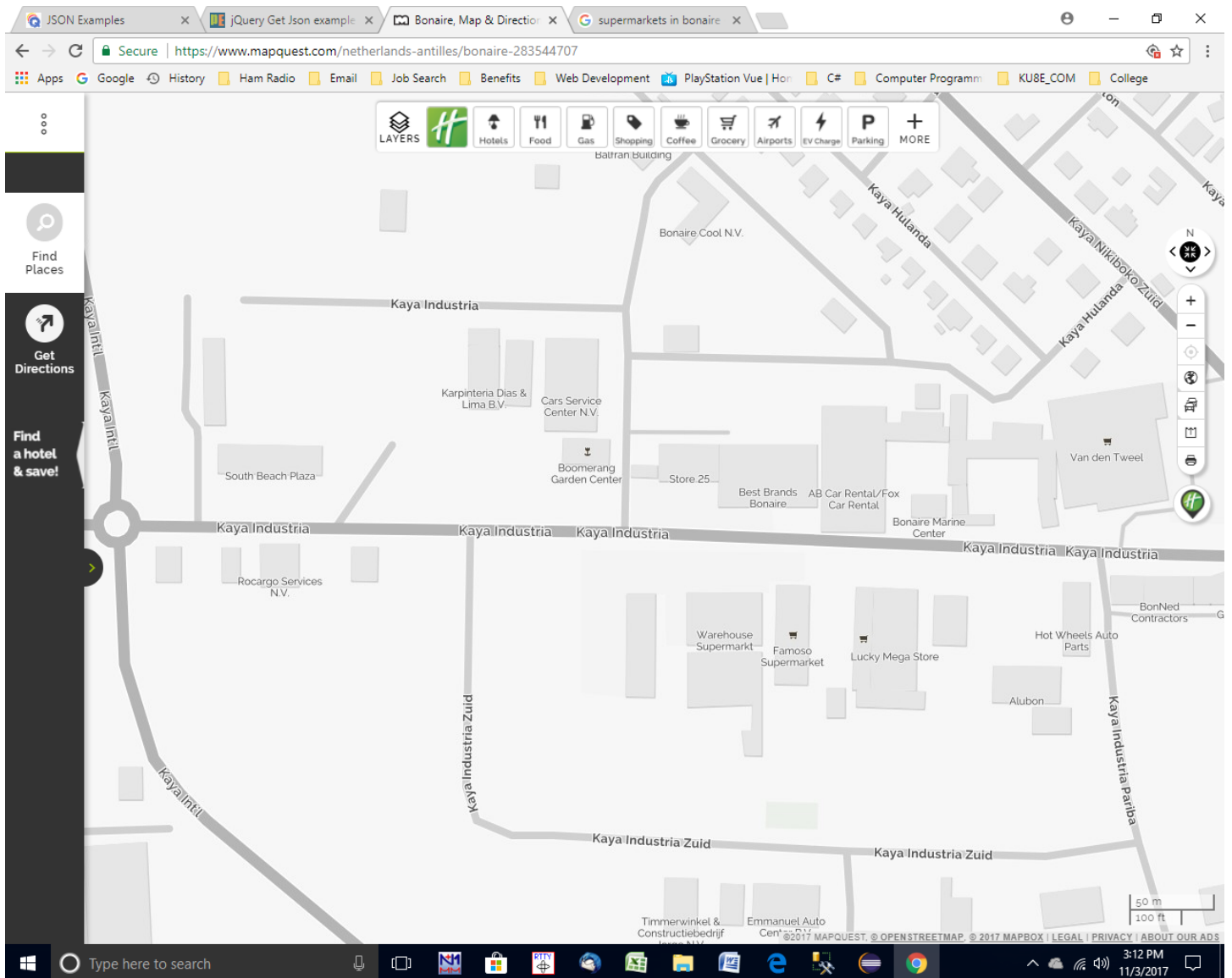
If you drive down the road into Rincon there is a mini market named **Excellent Mini Market**. When you come down the road into Rincon turn left on **Kaya Rincon**. It's just down the street on **Kaya Rincon**.



If you take the highway from **Rincon** to **Kralendik** there are several supermarkets on **Kaminda Gurubu**. There is also one right downtown called **Top Supermarket** that we go to all the time. **Note that when you go shopping for food that you take a bunch of bags from the utility room in the house. They don't give you free bags for your groceries.**



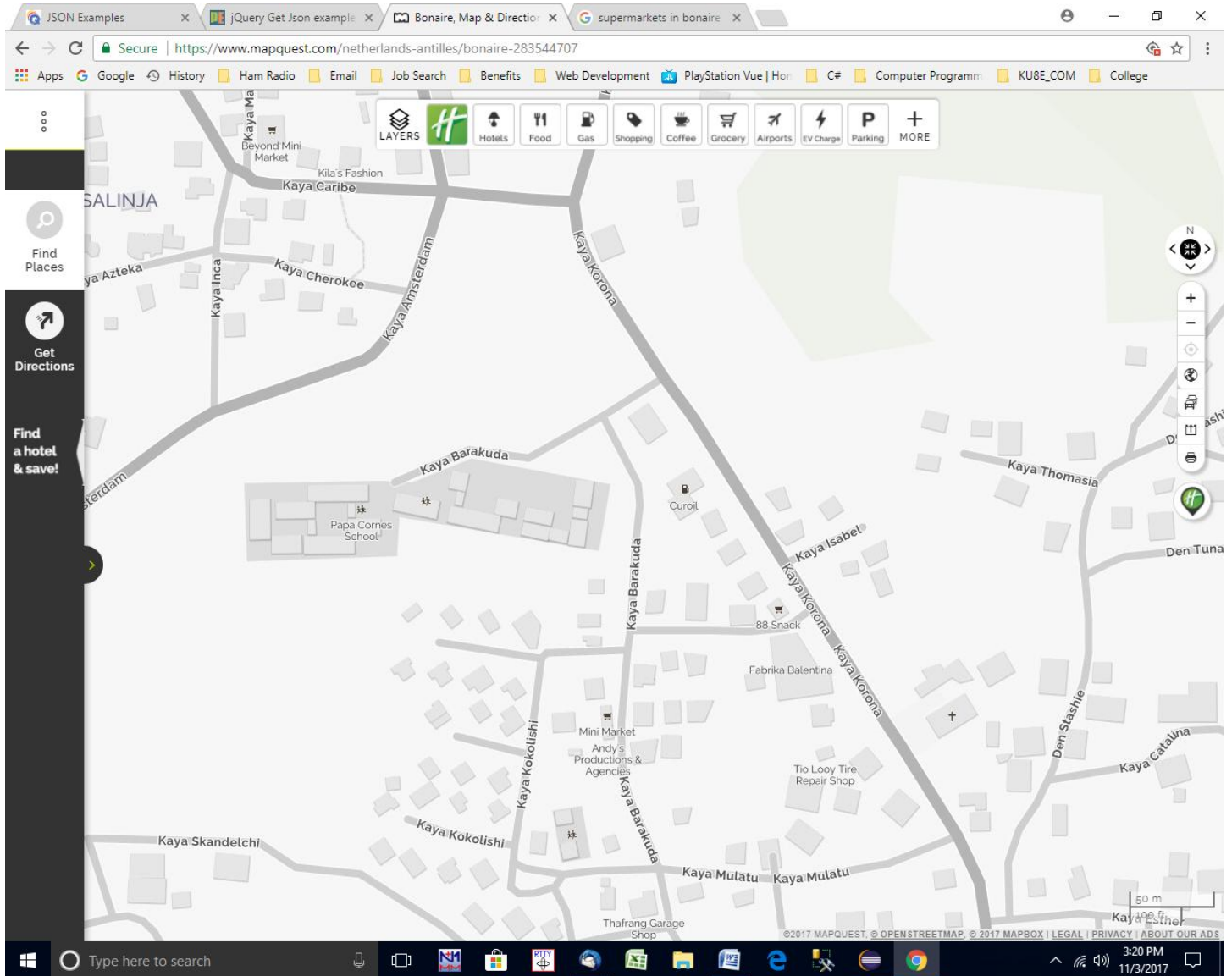
When you go back towards the airport there are several grocery stores on **Kaya Industria**. This is the same street where the **AB Rental Car** office is located. We go to **Van Den Tweel** a lot. They have the best choice of any of the groceries on the island.



Gas Stations

Be careful when you drive around Bonaire. There aren't a lot of gas stations. Below are the two main ones.

Curoil on Kaminda Gurubu (This is the road from Rincon to Kralendik)



Bonaco at Kaya Industria traffic circle (On road towards airport)

